



MODELS GUIDE 2026



KAICYCLES®
Waterbikes ⚡ eBoats



www.kaicycles.com



0 EMISSIONS
100 EMOTIONS

"Love and respect for our environment is the essence of our passion to make a better world creating zero emission vehicles oriented towards the sustainable water mobility of the future"

Ramón Francisco García, CEO

ABOUT US

Kaicycles was created in 2019 and since then design, manufacture and sell high-quality electric and pedal naval artifacts for everyone. We develop our products with the greatest care and highest quality materials. With office and distribution center in Barcelona Spain we can deliver around the world.

Being modular, removable, transportable and fully customizable, they are defined as unique in their category and ideal for coastal waters, rivers and lakes 365 days a day to enjoy sports, recreation, fishing, observation and rescue activities.



MAX
WATERBIKE



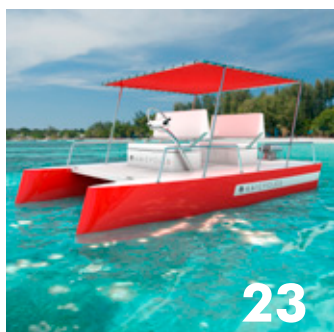
ONA
PEDAL BOAT



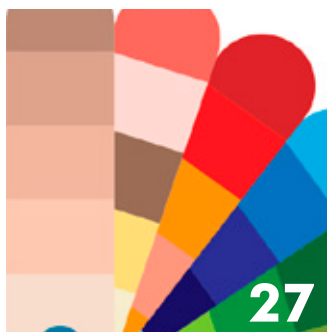
ZEN
PEDAL CATAMARAN



LUX
ELECTRIC SCCOTER



NEO
ELECTRIC CATAMARAN



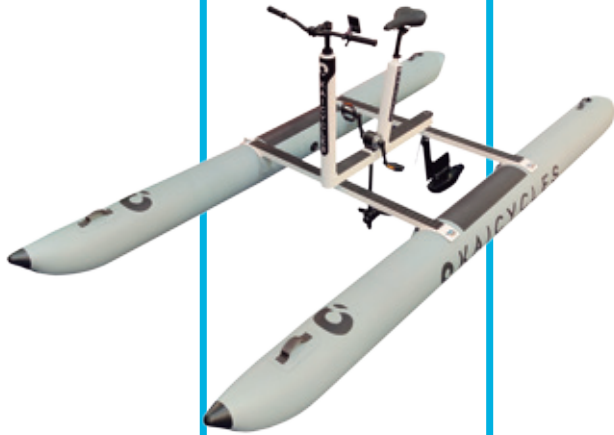
DESIGN
COLORS & TEXTURES

The models featured in this catalog represent the spirit and craftsmanship of Kaicycles. While we strive to present accurate and up-to-date information, all colors, finishes, technical details and prices are shown here are subject to change without prior notice. Product availability may also vary depending on production schedules and material supply.

All quotations, orders and sales contracts issued by Kaicycles are governed and regulated by the Barcelona Chamber of Commerce, ensuring transparency, reliability, and full compliance with applicable commercial standards.

S U S T A I N A B L E A Q U A T

MAX



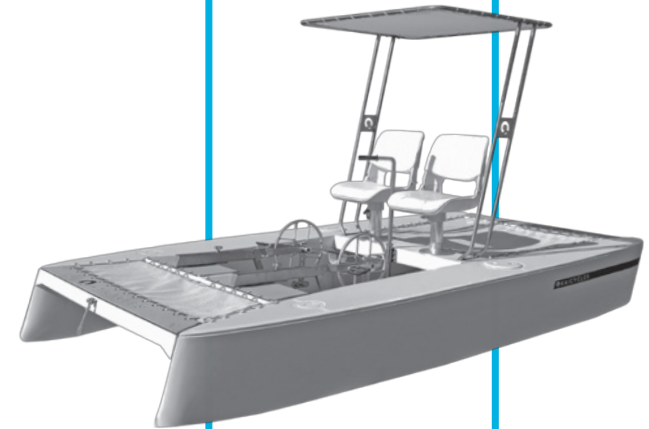
WATER BIKE
INFLATABLE

ONA



PEDAL BOAT
INFLATABLE

ZEN



PEDAL CATAMARAN
FIBER GLASS

..... PEDAL & ELECTRIC

I C M O B I L I T Y



Two-Year Legal Warranty Included

LUX



E-SCOOTER
INFLATABLE

NEO



E-CATAMARAN
FIBER GLASS

..... **FULL ELECTRIC**



KAICYCLES®
Waterbikes ⚡ eBoats



PEDAL & ELECTRIC



FULL ELECTRIC

MAX

MODEL

Have fun exercising in your favorite place and glide over the water with maximum comfort and stability.

Water bike designed to enjoy the sea on your coast or in fresh waters such as lakes, rivers or swamps exercising in a sustainable way. Very comfortable for people of any age and adaptable to different sizes. With its comfortable pedaling and pleasant cruising speed you can navigate 365 days a year. Easy to assemble and disassemble with the advantage of being able to store it anywhere.





Quick maneuver

Fast & easy assembly

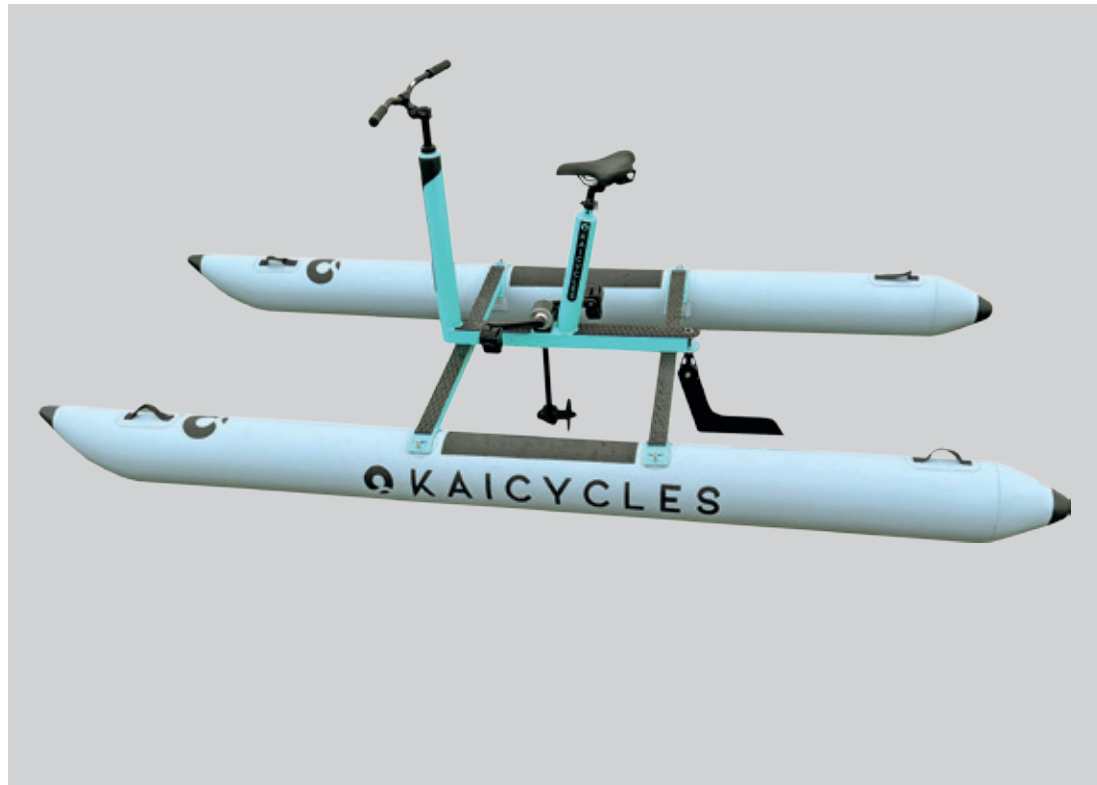
Carrying handles

Inflatable made in Germany

Aluminium frame

Maintenance-free pedaling

Electric optional outboard



MEASURES

Large 12,13" - 3.7 m.

Wide 4,11" - 1.5 m.

Height 3,11" - 1.2 m.

Weight 27 Kg.

SPECS

Heat Sealed Inflatables. PVC 1.3mm. Valmex Germany.

Reinforced stainless steel steering bar.

Aluminium pedal drive system with nylon propeller.

FEATURES

Non-slip EVA foam in walkable areas.

Aluminum frame welded and painted at high temperature.

0 maintenance for not using wires or metal bearings

OPTIONALS

Electric Jet for rudder and functional for diving. Kahe France.

Reinforced front platform to carry a child, pet or luggage..

Customizable with your logo & colors. RAL chart.

WARRANTY

Two-Year Legal Warranty Included for heavy use.







KAICYCLES
Waterbikes ⚡ eBoats

ONA

MODEL

Relax and enjoy with family and friends to enjoy new unforgettable adventures together.



Pedal Boat or pedal boat to enjoy both as a couple or as a family combining exercise and surroundings in relaxation or adventure mode, suitable for freshwater such as lakes and rivers as well as coastal saltwater. Very versatile for different nautical activities in a comfortable way and for people of any age. Thanks to the lightness of the catamarans and their ease of assembly, transport, storage and good cruising speed with a smooth and silent pedaling, it will allow you to navigate 365 days a year.



Carrying handles

Comfortable seats

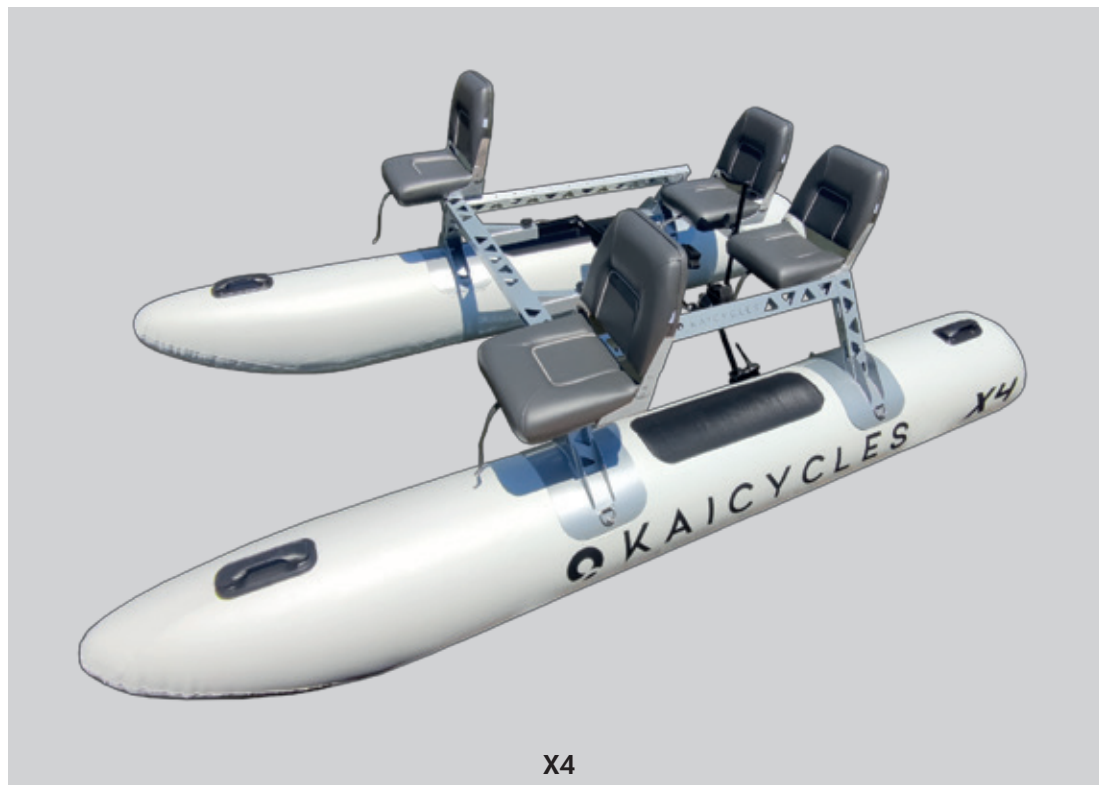
Inflation valve

Double layer PVC

Maintenance-free pedalling

Aluminium frame

Optional electric outboard



MEASURES

Large: 12,13" - 3.7 m.

Wide: 6,74" - 2 m.

Height: 3,28" - 1 m.

Weight: 70 Kg.

SPECS

Heat Sealed Inflatables. PVC 1.3mm. Valmex Germany.

Comfort & style foldables premium seats. Vetus Netherlands.

2U. Aluminium pedals drive system with nylon propeller.

FEATURES

Non-slip textured PVC finish on inflatables at the access area.

Aluminum frame welded and painted at high temperature.

0 maintenance for not using wires or metal bearings

OPTIONALS

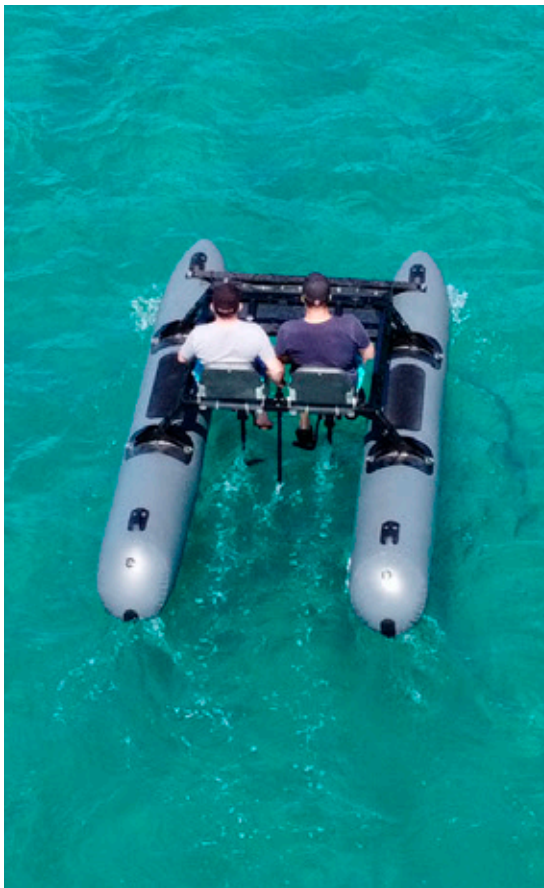
Electric Jet for rudder and functional for diving. Kahe France.

Reinforced front platform to carry a child, pet or luggage..

Customizable with your logo & colors. RAL chart.

WARRANTY

Two-Year Legal Warranty Included for heavy use.



X2



X4

ZEN

MODEL

Elegance and design 0 emissions to navigate by pedal on your favorite beach with your family.



A whim for lovers of the sea with which this elegant nautical artifact also called Pedal Boat, Hidropedal or Pedalo satisfies your desire to navigate and exercise comfortably. Its large platform can be equipped for any of the activities you want to do, making it ideal for boat rental companies.

With the great stability of its double hull and its high hydrodynamics it will make you enjoy it to the fullest and in complete safety. An exclusive activity for individuals as well as for professionals from water sports nautical centers.



Solarium platform

Removable bimini

Maintenance-free pedaling

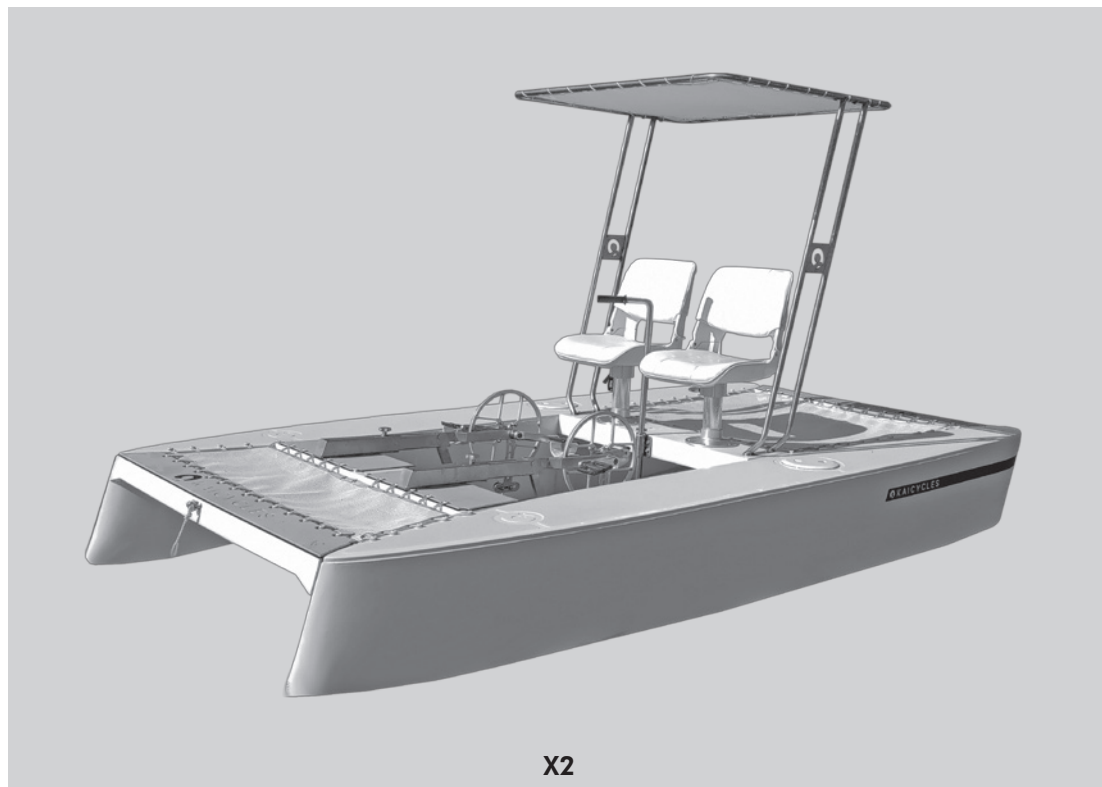
Fully customizable

Multi hull fiber glass

Storage container

Optional electric outboard

Optimised Hydro Dynamic



X2



X1



ELECTRIC JET

MEASURES

Large: 12,13" - 3.7 m.

Wide: 6,74" - 2 m.

Height: 6,23" - 1,9 m.

Weight: 175 Kg.

SPECS X2

Lightweight reinforced fiberglass & optimized hydrodynamics.

Comfort & style foldables premium seats. Vetus Netherlands.

2U. Aluminium pedals drive system with nylon propeller.

FEATURES

Non-slip diamond textured fiber glass finish on top.

Double watertight storage compartment.

0 maintenance for not using wires or metal bearings.

Removable bimini top with stainless steel frame.

OPTIONALS

Electric Jet for rudder and functional for diving. Kahe France.

Customizable with your logo & gelcoat colors chart.

WARRANTY

Two-Year Legal Warranty Included for heavy use.



X1





KAICYCLES
Waterbikes ⚡ eBoats

LUX

MODEL

Feel the speed silently and navigate ecologically to new destinations with your partner.

Innovative concept of Electric Water Scooter of exclusive design very easy to use for one or two people. Totally respectful with the environment with which you can navigate discovering new horizons in complete silence in a comfortable and safe way. It offers an ecological and economical alternative for lovers of jet skis with an electric motor without any type of maintenance, making it ideal for boat rental companies. With more than enough autonomy to cover long distances and carry out your favorite water activities.





Quick maneuver

Comfortable seat

Fast & easy assembly

Electric outboard

Box space

Double layer PVC



MEASURES

Large: 12,13" - 3.7 m.

Wide: 5,58" - 1.7 m.

Height: 3,28" - 1 m.

Weight: 80 Kg.

SPECS X2

Heat Sealed Inflatables. PVC 1.3mm. Valmex Germany.

600W. Electric Jet and functional for diving. Kahe France.

Disassemblable lightweight reinforced aluminium frame.

Comfort & style hand made seat with high-density foam.

FEATURES

Internal storage compartment for your personal accessories.

0 maintenance for not using wires or metal bearings.

Non-slip PVC texture on inflatables for safe access.

OPTIONALS

Reinforced front platform to carry a child, pet or luggage.

Customizable with your logo & colors. RAL Chart.

WARRANTY

Two-Year Legal Warranty Included for heavy use.



ELECTRIC JET



NEW

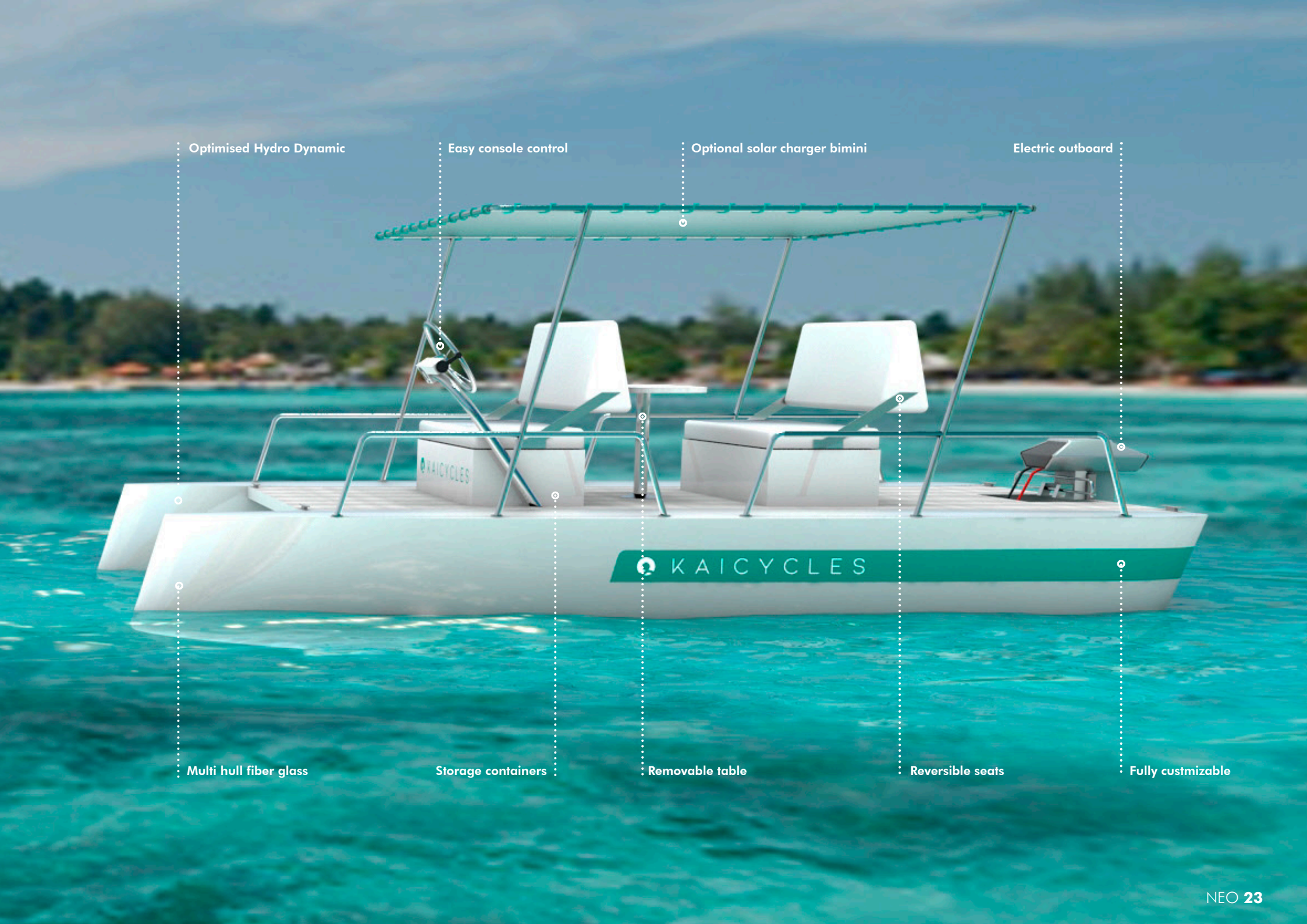
NEO

MODEL

Your private island to sail eco-friendly with maximum comfort and style to enjoy the sea and nature.



Electric boat in the nautical artifact category that offers an ecological alternative oriented towards sustainable navigation, ideal for boat rental companies. Enjoy a good cruising speed, great autonomy and an attractive style of comfortable steering that is easy to use by people of any age.



Optimised Hydro Dynamic

Easy console control

Optional solar charger bimini

Electric outboard

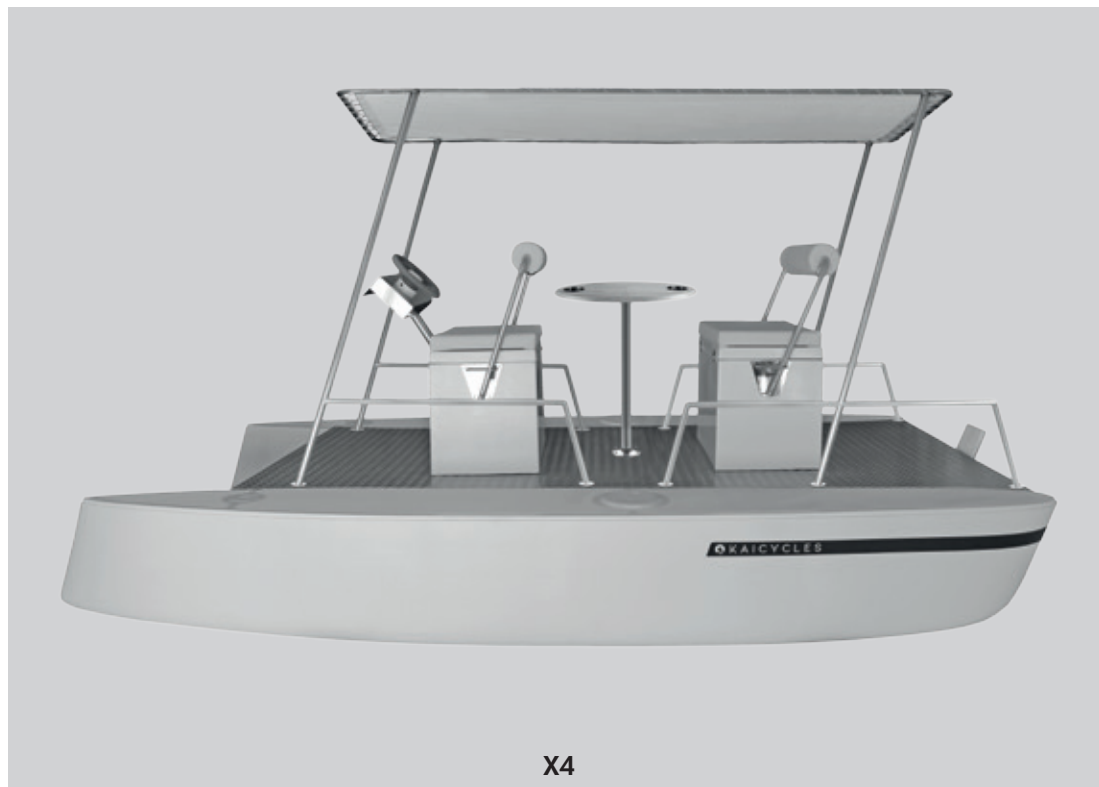
Multi hull fiber glass

Storage containers

Removable table

Reversible seats

Fully customizable



MEASURES

Large: 12,13" - 3.7 m.

Wide: 6,74" - 2 m.

Height: 6,23" - 1,9 m.

Weight: 175 Kg.

SPECS X4

Lightweight reinforced fiberglass & optimized hydrodynamics.

Electric outboard 3000w. High autonomy.

Comfort & style foldables premium seats. Vetus Netherlands.

FEATURES

Non-slip diamond textured fiber glass finish on top.

Double watertight storage compartment.

Removable bimini top with stainless steel frame.

OPTIONALS

Solar panel charging kit on bimini top.

Customizable with your logo & gelcoat colors chart.

WARRANTY

Two-Year Legal Warranty Included for heavy use.



X4



X2



X2



INFLATABLE

The indicated technical specifications are average values. Colours are subject to slight variations. References made to RAL are indications only. Always check the validity of fire certificate. All Mehler Technologies products are in accordance with the European REACH directive (Registration, Evaluation and Authorisation of Chemicals). Manufactured in Germany under the internationally recognized standard of quality DIN 9001 and ISO 50001 for energy management. Other versions upon request, program changes reserved.

(Subject to availability)

Models

MAX ONA LUX



907



729 T (Stock)



104



241 L



905 LT



418729 (Special)



350



691



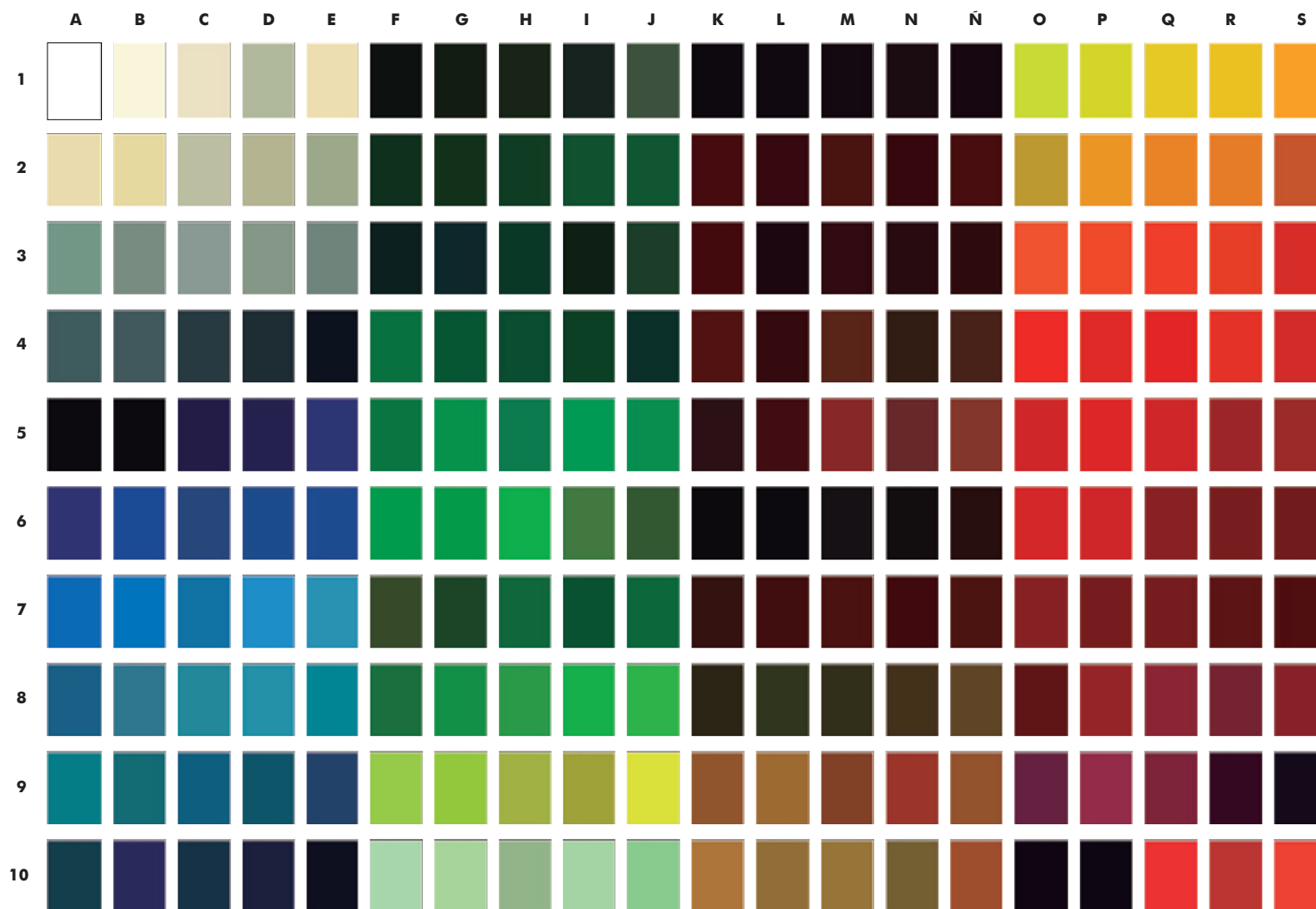
547



783 (Stock)



573



FIBER GLASS

High-quality finish on the visible surface of a fibre-reinforced composite. Gelcoats are modified resins which are applied to moulds in the liquid state. They are cured to form crosslinked polymers and are subsequently backed with thermoset polymer matrix composites which are often mixtures of polyester resin and fiberglass, or epoxy resin which is most commonly used with carbon fibre for higher specific strength. The manufactured Gelcoats are designed to be durable, providing resistance to ultraviolet degradation and hydrolysis.

Models

ZEN NEO

RAL COLOR CHART

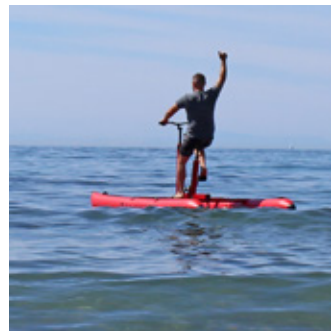
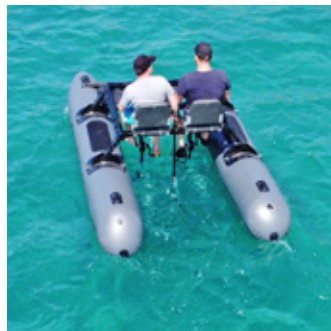
Baked paint is a special paint that is applied as a dry fluid, dry powder, and is used to obtain a harder and more durable finish than conventional paint. It also achieves excellent results in both finishing and sealing on materials such as stainless steel and aluminum.

This coating requires specialized facilities equipped with curing ovens, booths for application using electrostatic, manual or automatic guns and an overhead transport chain, where the pieces are hung.



Models

MAX **ONA** **LUX**
ZEN **NEO**



FOLLOW US

Thank you for choosing to enjoy in a eco-friendly way with Kaicycles. Every ride you take helps us move toward a cleaner future. We'd love to keep sharing this journey with you. Join us on our social networks and be part of a community that rides with purpose, joy, and respect for the planet.



#kaicycles



0 EMISSIONS

100 EMOTIONS



KAICYCLES®
Waterbikes ⚡ eBoats

